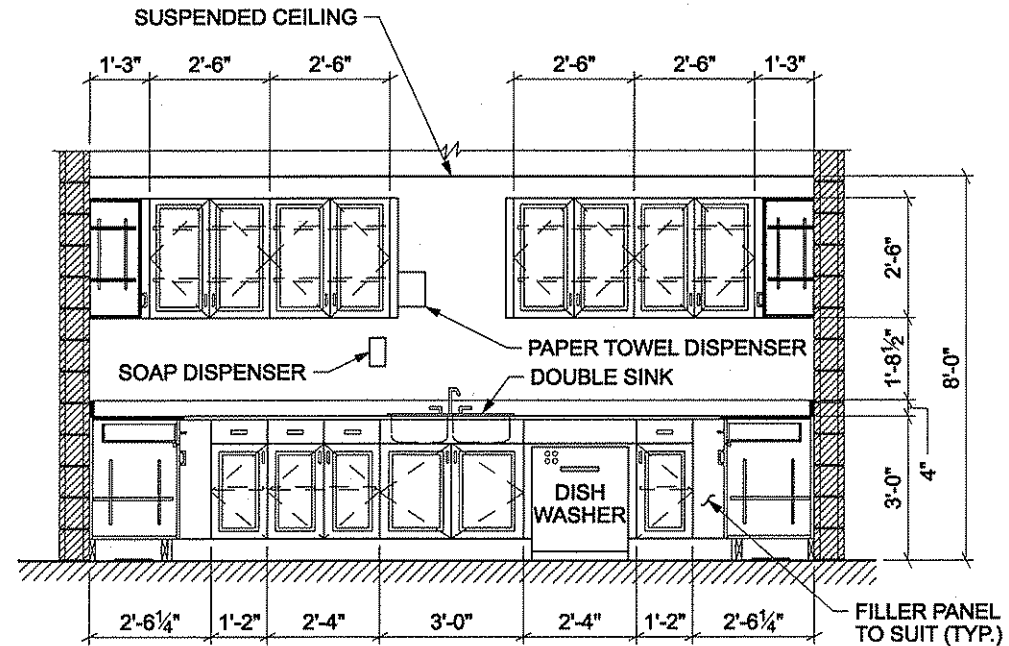
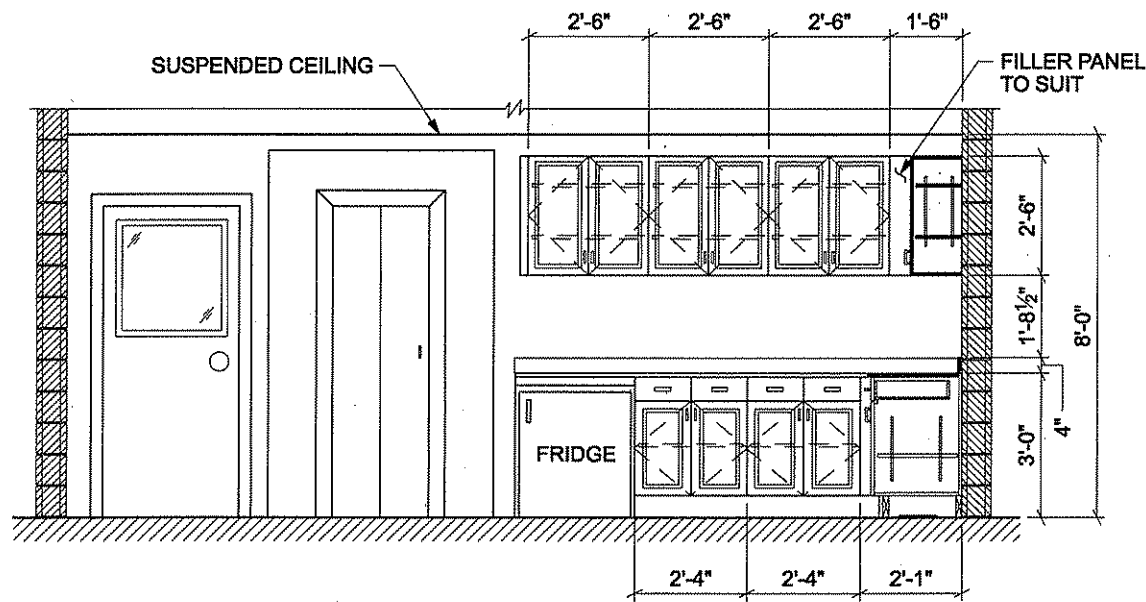


ELEVATION 1
1/4" = 1'-0"
6-1



ELEVATION 2
1/4" = 1'-0"
6-1



ELEVATION 3
1/4" = 1'-0"
6-1

THIS DOCUMENT AND THE INFORMATION, DESIGNS, INVENTIONS, &/OR IMPROVEMENTS CONTAINED HEREIN ARE THE PROPERTY OF ADI & ARE SOLELY FOR USE ON BEHALF OF ADI AND ARE NOT TO BE DISCLOSED, COPIED, OR USED FOR ANY OTHER PURPOSE WHATSOEVER UNLESS SPECIFIC PERMISSION IS FIRST OBTAINED FROM AN AUTHORIZED REPRESENTATIVE OF ADI.

No.	Revision	Ckd. By	Date

ADI Limited
Fredericton, NB, Canada
Engineering, Consulting, Procurement
and Project Management
Charlottetown, Moncton, Saint John, Truro, Halifax, Sydney
Port Hawkesbury, St. John's, Fredericton and Salem, NH
2889-199.1

RELEASED FOR CONSTRUCTION

Const. North	
Drawn By:	RJL
Dwg. Standards Ckd. By:	<i>[Signature]</i>
Designed By:	MJM ²
Date Printed	Dwg. Design Ckd. By: <i>[Signature]</i>

ADI Systems Inc.
Waste Treatment Systems
Fredericton, NB, CA and Salem, NH, US
CAN PATENT #1253266; #2,096,852
USA PATENTS #5,505,848; #5,587,080
MEXICO PATENT #190898

Project Title	ANAEROBIC TREATMENT SYSTEM FOR RENOVA ENERGY PLC HEYBURN, ID	
Dwg. Title	CASEWORK ELEVATIONS	
Project No.	1079-3.1	
Dwg. No.	6-4	Rev. No. 0
Scale	1/4" = 1'-0" This drawing is not to be scaled	