

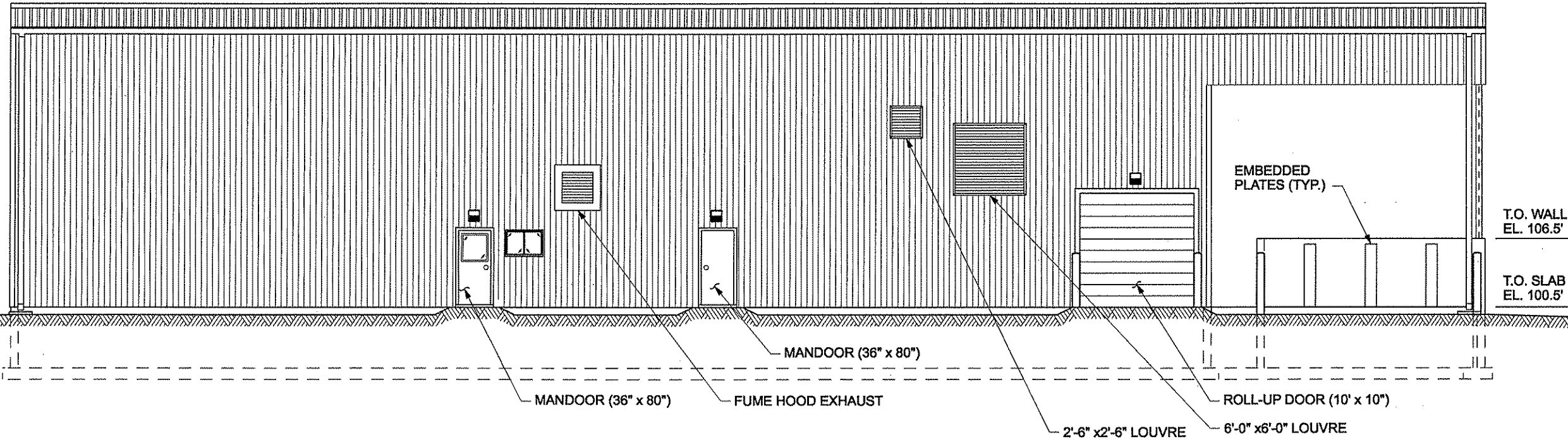
G:\2889\1991\CONTROL\107-2-CONTROL BUILDING E & W ELEVATIONS.dgn

MODEL: 6-2

PLOTTED BY: qjn

DATE: 2/23/2007

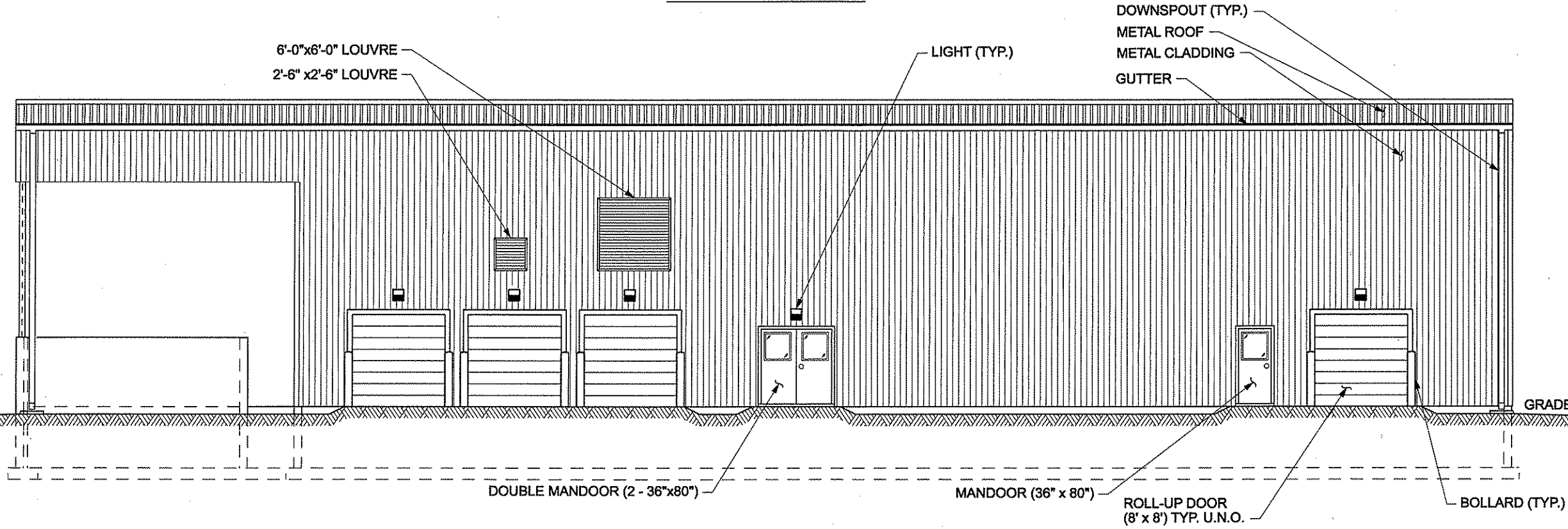
3:51:53 PM



T.O. WALL  
EL. 106.5'

T.O. SLAB  
EL. 100.5'

**EAST ELEVATION**



**WEST ELEVATION**

THIS DOCUMENT AND THE INFORMATION, DESIGNS, INVENTIONS, &/OR IMPROVEMENTS CONTAINED HEREIN ARE THE PROPERTY OF ADI & ARE SOLELY FOR USE ON BEHALF OF ADI AND ARE NOT TO BE DISCLOSED, COPIED, OR USED FOR ANY OTHER PURPOSE WHATSOEVER UNLESS SPECIFIC PERMISSION IS FIRST OBTAINED FROM AN AUTHORIZED REPRESENTATIVE OF ADI.

No.	Revision	Ckd. By	Date

**ADI Limited**  
 Fredericton, NB, Canada  
 Engineering, Consulting, Procurement  
 and Project Management  
 Charlottetown, Moncton, Saint John, Truro, Halifax, Sydney  
 Port Hawkesbury, St. John's, Fredericton and Salem, NH  
 2889-199.1

RELEASED FOR CONSTRUCTION

Date Printed	Const. North
	Drawn By: <b>RJL</b>
	Dwg. Standards Ckd. By: <i>[Signature]</i>
	Designed By: <b>MJM</b>
	Dwg. Design Ckd. By: <i>[Signature]</i>

**ADI Systems Inc.**  
 Waste Treatment Systems  
 Fredericton, NB, CA and Salem, NH, US  
 CAN PATENT #1253266; #2,096,852  
 USA PATENTS #5,505,848; #5,587,080  
 MEXICO PATENT #190898

Project Title	
ANAEROBIC TREATMENT SYSTEM FOR RENOVA ENERGY PLC HEYBURN, ID	
Dwg. Title	
CONTROL BUILDING EAST & WEST ELEVATIONS	
Project No.	1079-3.1
Dwg. No.	6-2
Rev. No.	0
Scale	3/32" = 1'-0" This drawing is not to be scaled