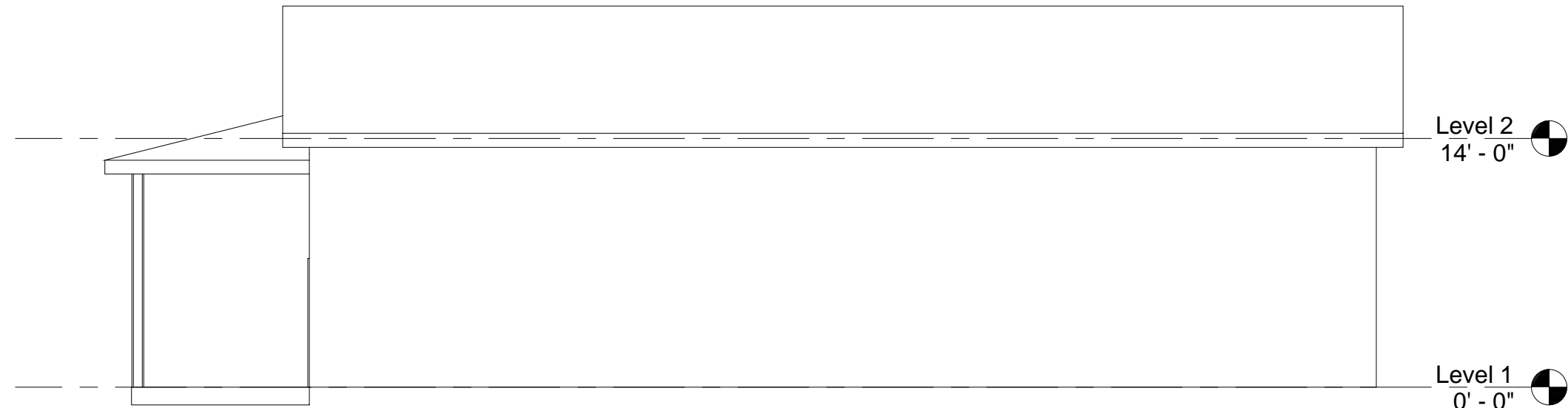
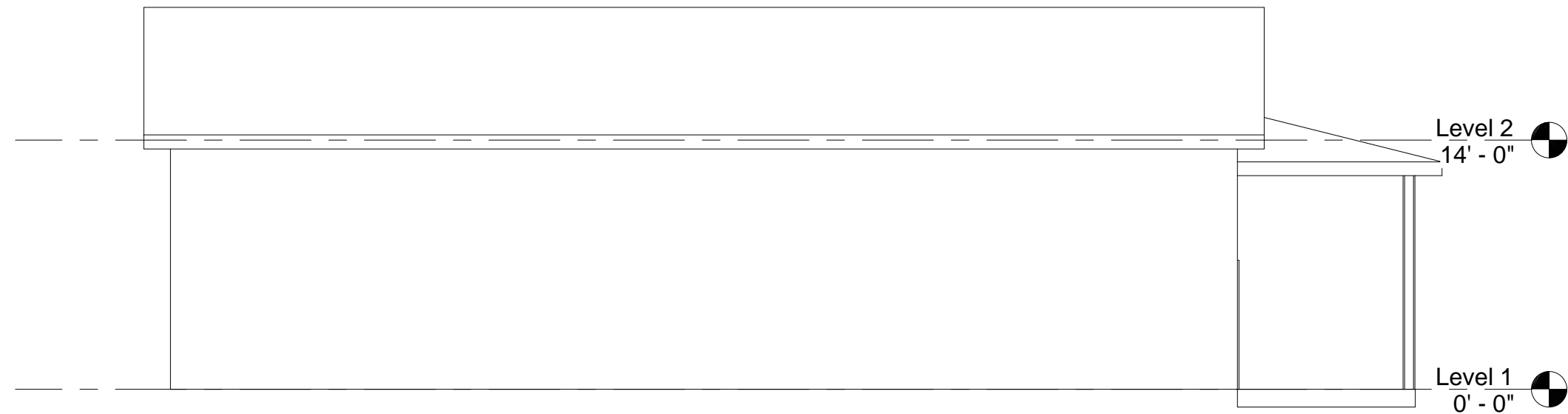


① East
1/8" = 1'-0"

② West
1/8" = 1'-0"



③ North
1/8" = 1'-0"



④ South
1/8" = 1'-0"

GARY D. JONES
CONSTRUCTION
Building With Pride since 1959
247 W Hwy 30
Burley, ID 83318
Phone: 208-678-1118
Fax: 208-678-1119



SHEET TITLE

ELEVATIONS

PROJECT/ OWNER

CHAD CLARK

DRAWN BY

JASON JONES

REVISION DATE

MAY 1, 2007

SHEET NUMBER

A-102