

① Level 1
1/16" = 1'-0"

A105

A104

A104

A105

GARY D. JONES
CONSTRUCTION
Building with Pride since 1959
 247 W Hwy 30
 Burley, ID 83318
 Phone: 208-678-1118
 Fax: 208-678-1119

SHEET TITLE
FIRST FLOOR LAYOUT

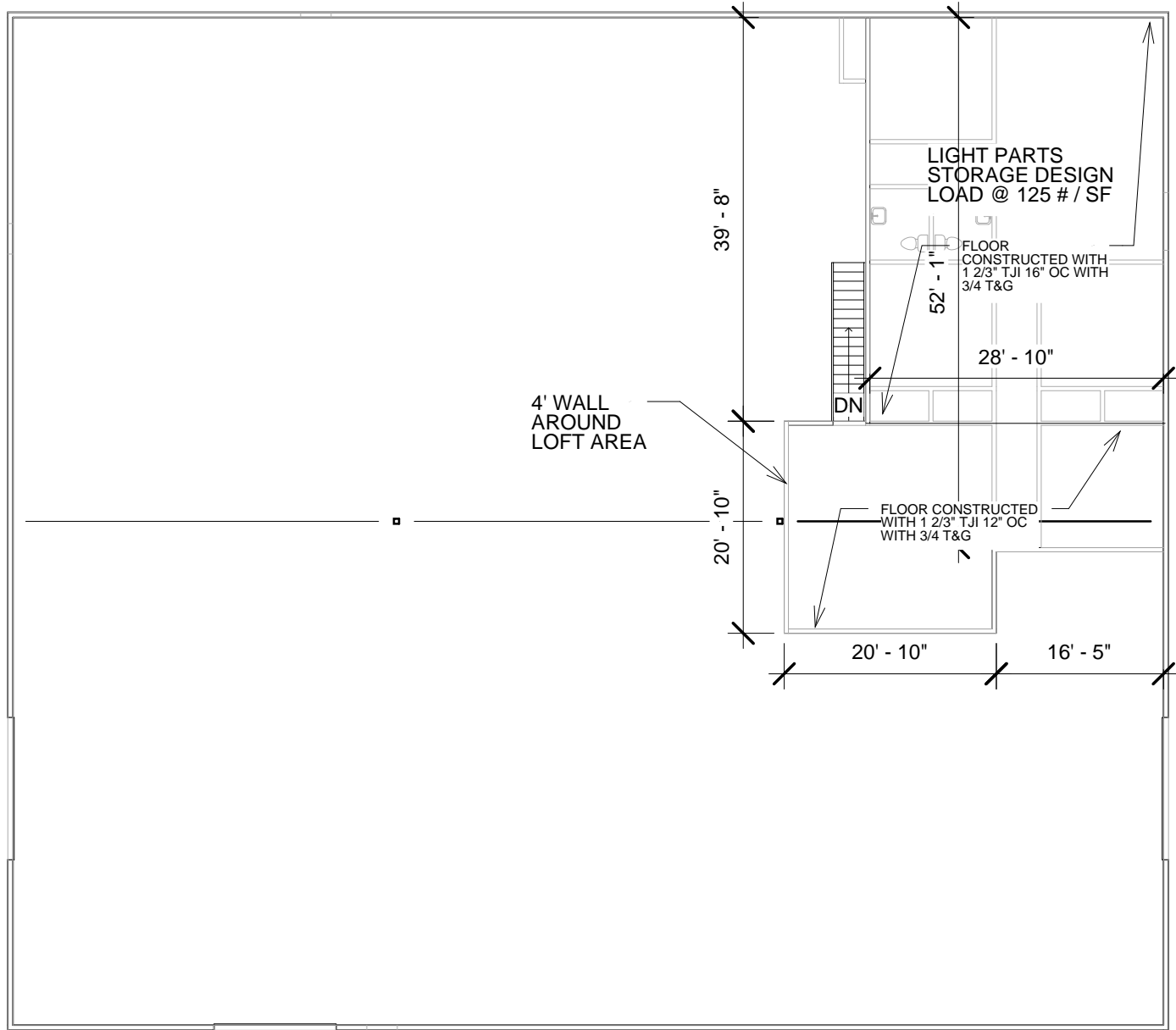
PROJECT/ OWNER
BUTTE / ZIMMATIC

DRAWN BY
JASON JONES

REVISION DATE
 May 15, 2007

SHEET NUMBER
A101

A105



A104

A104

A105

1 Level 2
1/16" = 1'-0"

Door Schedule

Mark	Width	Height	Family
2	3' - 0"	7' - 0"	Single-Flush
3	3' - 0"	7' - 0"	Single-Flush
4	3' - 0"	7' - 0"	Single-Flush
5	3' - 0"	7' - 0"	Single-Flush
6	3' - 0"	7' - 0"	Single-Flush
7	3' - 0"	7' - 0"	Single-Flush
8	3' - 0"	7' - 0"	Single-Flush
9	5' - 8"	6' - 8"	Double-Glass 1
14	14' - 0"	16' - 0"	Overhead-Sectional
15	14' - 0"	16' - 0"	Overhead-Sectional
16	3' - 0"	7' - 0"	Single-Flush
17	3' - 0"	7' - 0"	Single-Flush
18	12' - 0"	14' - 0"	Overhead-Sectional
19	3' - 0"	7' - 0"	Single-Flush
20	3' - 0"	7' - 0"	Single-Flush
22	4' - 0"	7' - 0"	Bifold-4 Panel
23	4' - 0"	7' - 0"	Bifold-4 Panel
24	4' - 0"	7' - 0"	Bifold-4 Panel
25	4' - 0"	7' - 0"	Bifold-4 Panel
27	3' - 0"	7' - 0"	Single-Flush
28	3' - 0"	7' - 0"	Single-Flush
29	4' - 0"	7' - 0"	Bifold-4 Panel

Window Schedule

Mark	Width	Height	Family
1	4' - 0"	4' - 0"	Fixed
2	4' - 0"	4' - 0"	Fixed
3	4' - 0"	4' - 0"	Fixed
4	4' - 0"	4' - 0"	Fixed
5	4' - 0"	4' - 0"	Fixed

GARY D. JONES
CONSTRUCTION
Building With Pride since 1959
 247 W Hwy 30
 Burley, ID 83318
 Phone: 208-678-1118
 Fax: 208-678-1119



SHEET TITLE

**SECOND FLOOR
LAYOUT**

PROJECT/ OWNER

BUTTE / ZIMMATIC

DRAWN BY

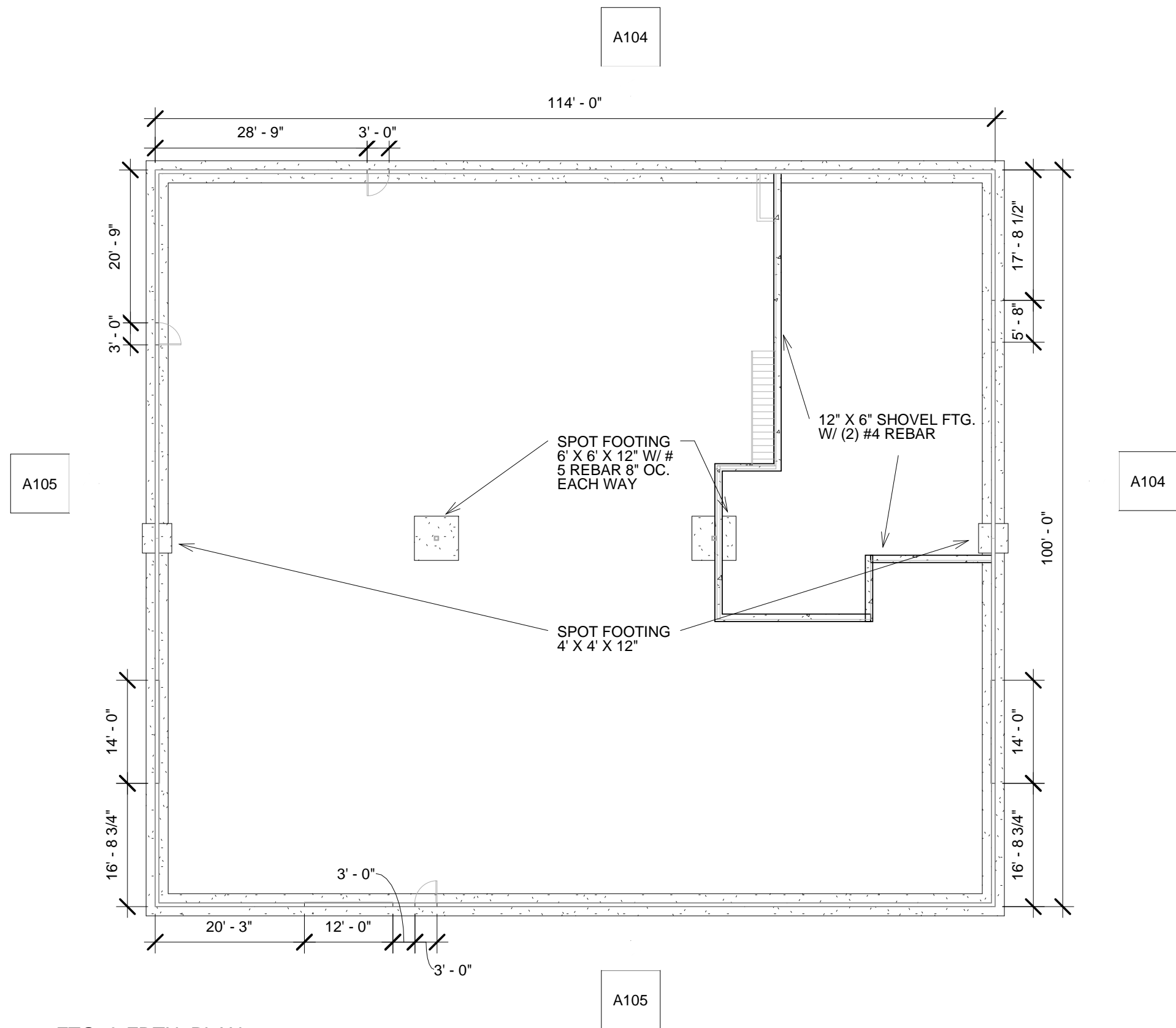
**JASON
JONES**

REVISION DATE

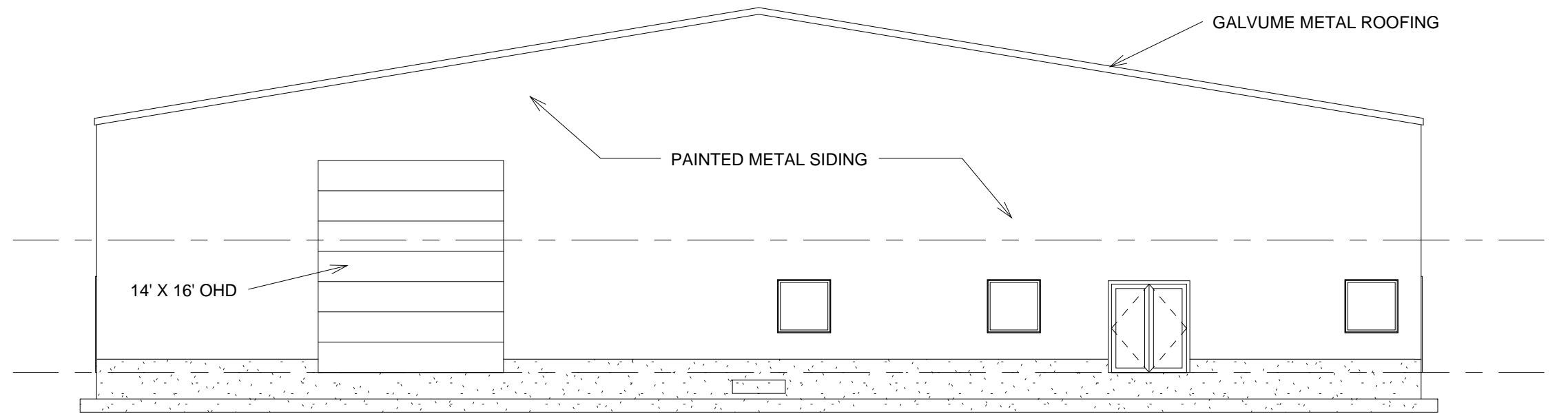
May 15, 2007

SHEET NUMBER

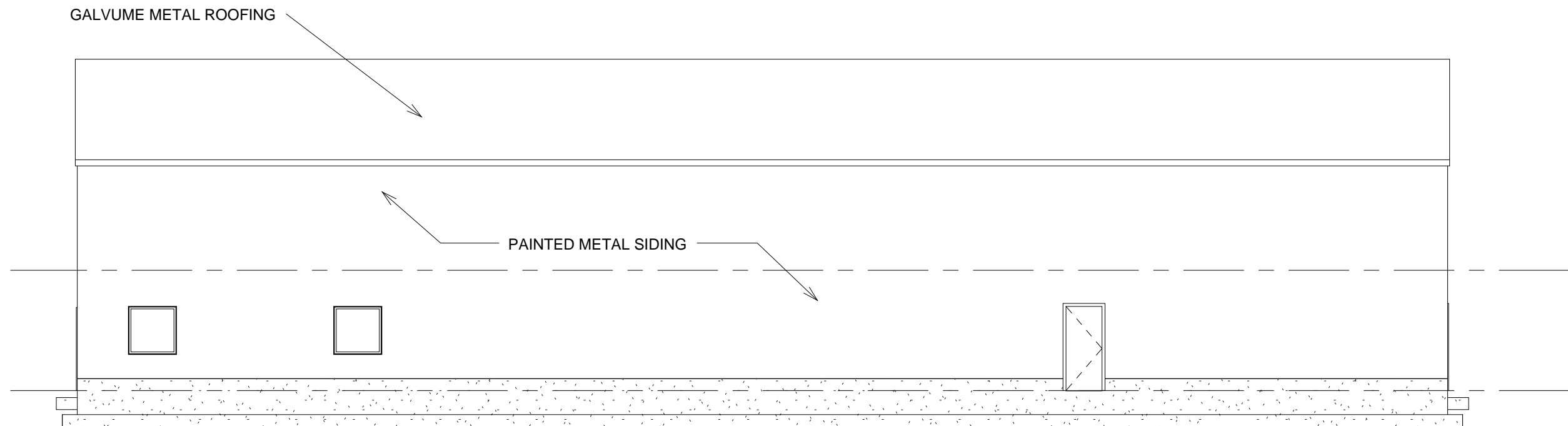
A102



1 FTG. & FDTN. PLAN
1/16" = 1'-0"



① East
1" = 10'-0"



② North
1" = 10'-0"

SHEET TITLE

ELEVATIONS

PROJECT/ OWNER

BUTTE / ZIMMATIC

DRAWN BY

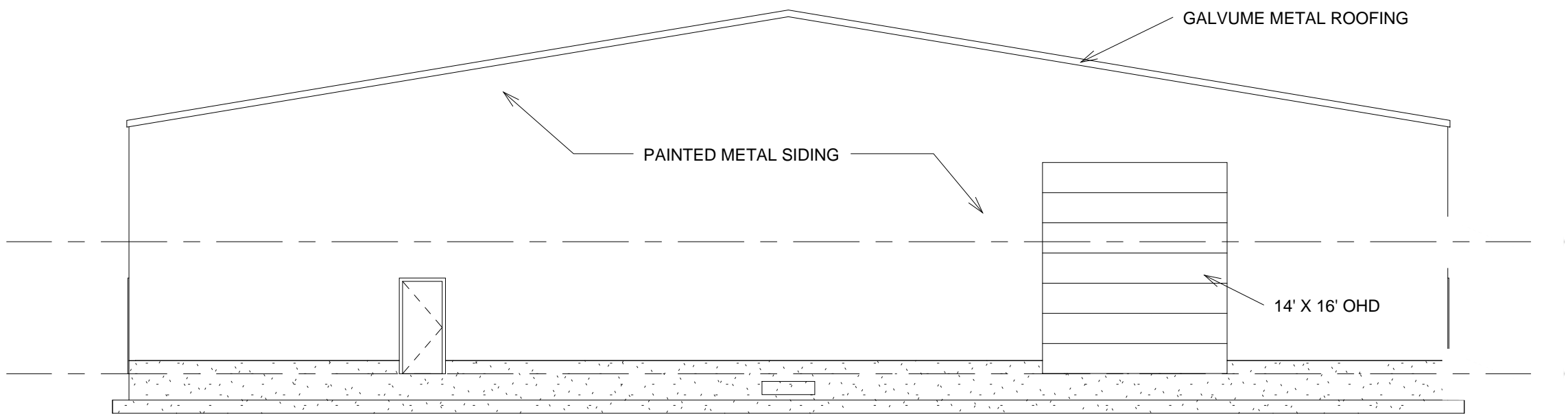
JASON
JONES

REVISION DATE

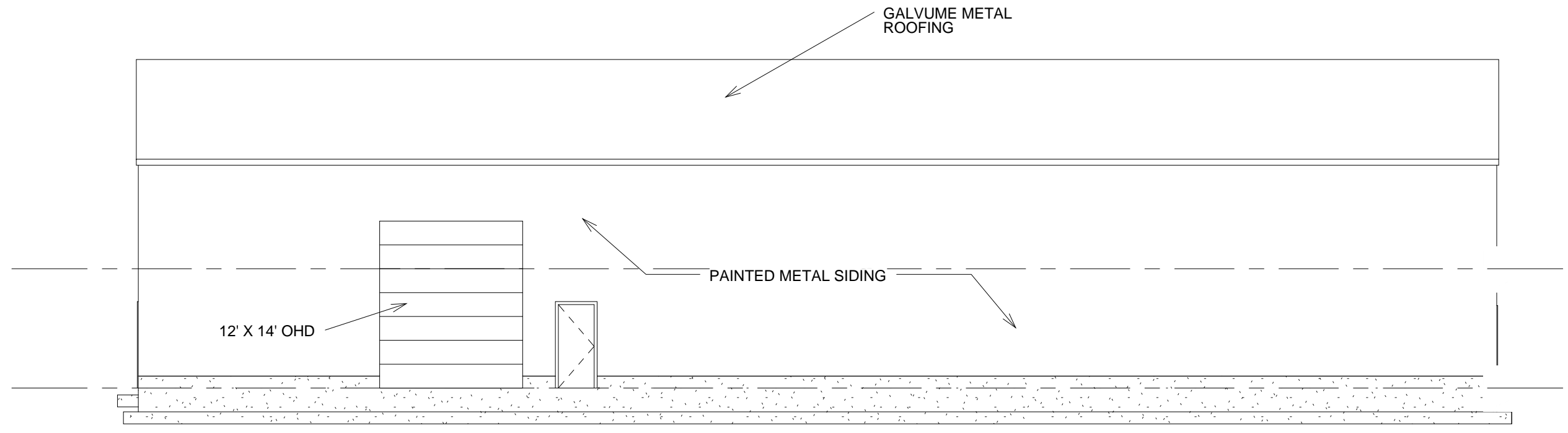
May 15, 2007

SHEET NUMBER

A104



① West
1" = 10'-0"



② South
1" = 10'-0"

**GARY D. JONES
CONSTRUCTION**
Building with Pride since 1959
247 W Hwy 30
Burley, ID 83318
Phone: 208-678-1118
Fax: 208-678-1119

SHEET TITLE

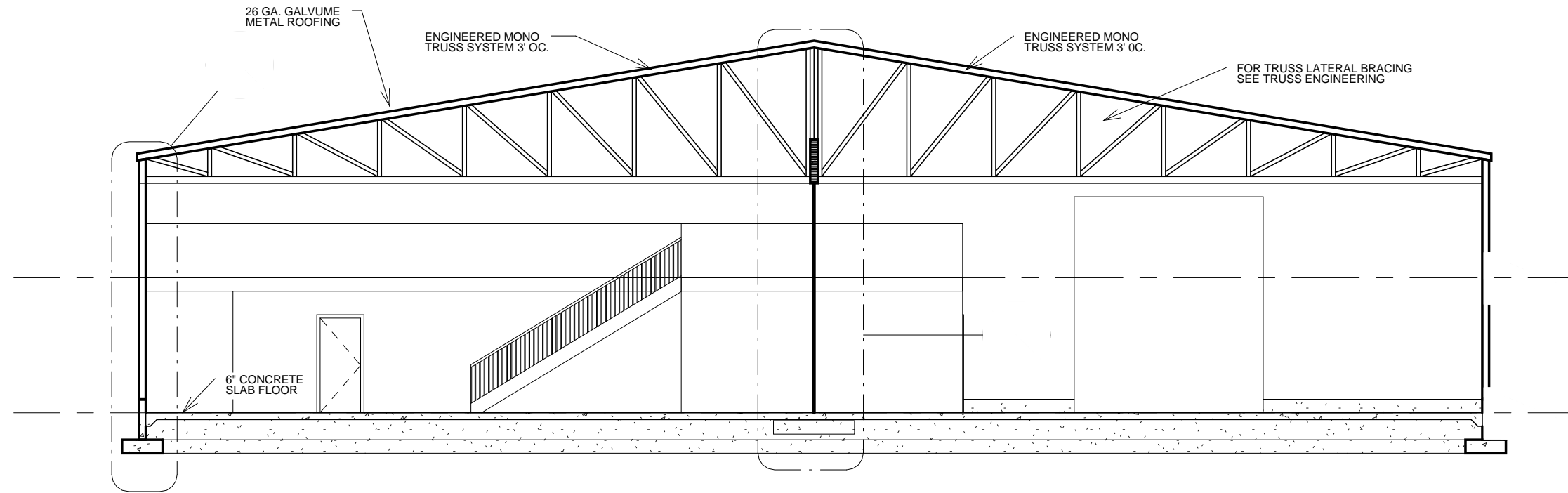
ELEVATIONS

PROJECT/ OWNER
BUTTE / ZIMMATIC

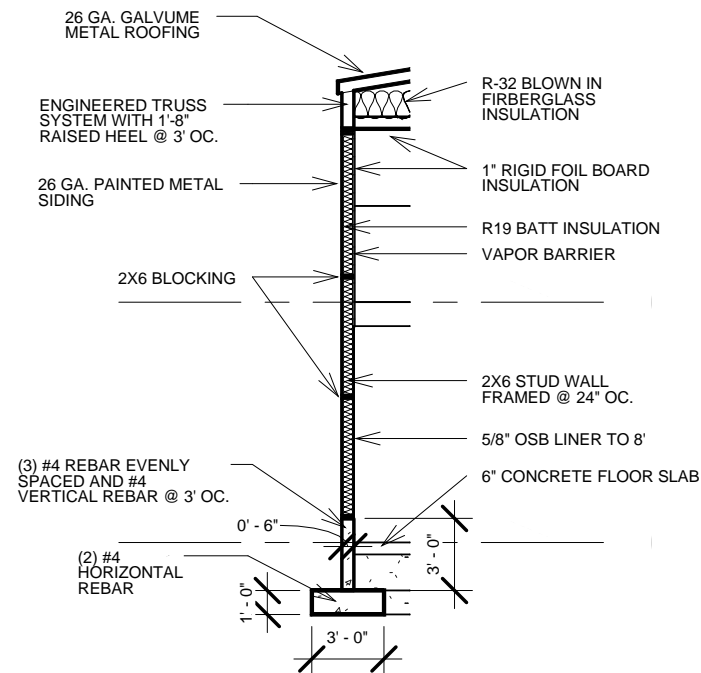
DRAWN BY
JASON
JONES

REVISION DATE
May 15, 2007

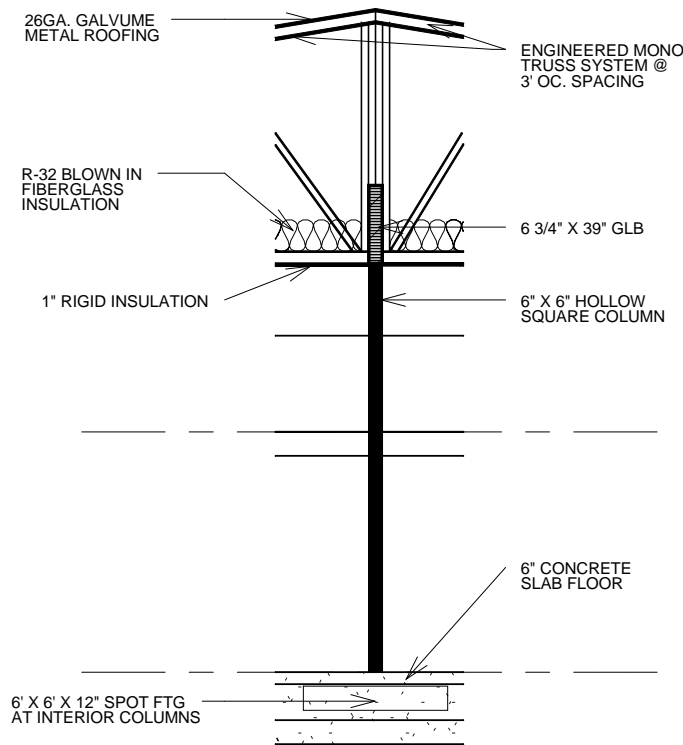
SHEET NUMBER
A105



1 Section 1
1" = 10'-0"



2 COMMON WALL SECTION
1/8" = 1'-0"



3 INTERIOR BEARING DETAIL
1/8" = 1'-0"

GARY D. JONES
CONSTRUCTION
Building with Pride since 1959
247 W Hwy 30
Burley, ID 83318
Phone: 208-678-1118
Fax: 208-678-1119



SHEET TITLE

SECTION VIEWS

PROJECT/ OWNER

BUTTE / ZIMMATIC

DRAWN BY

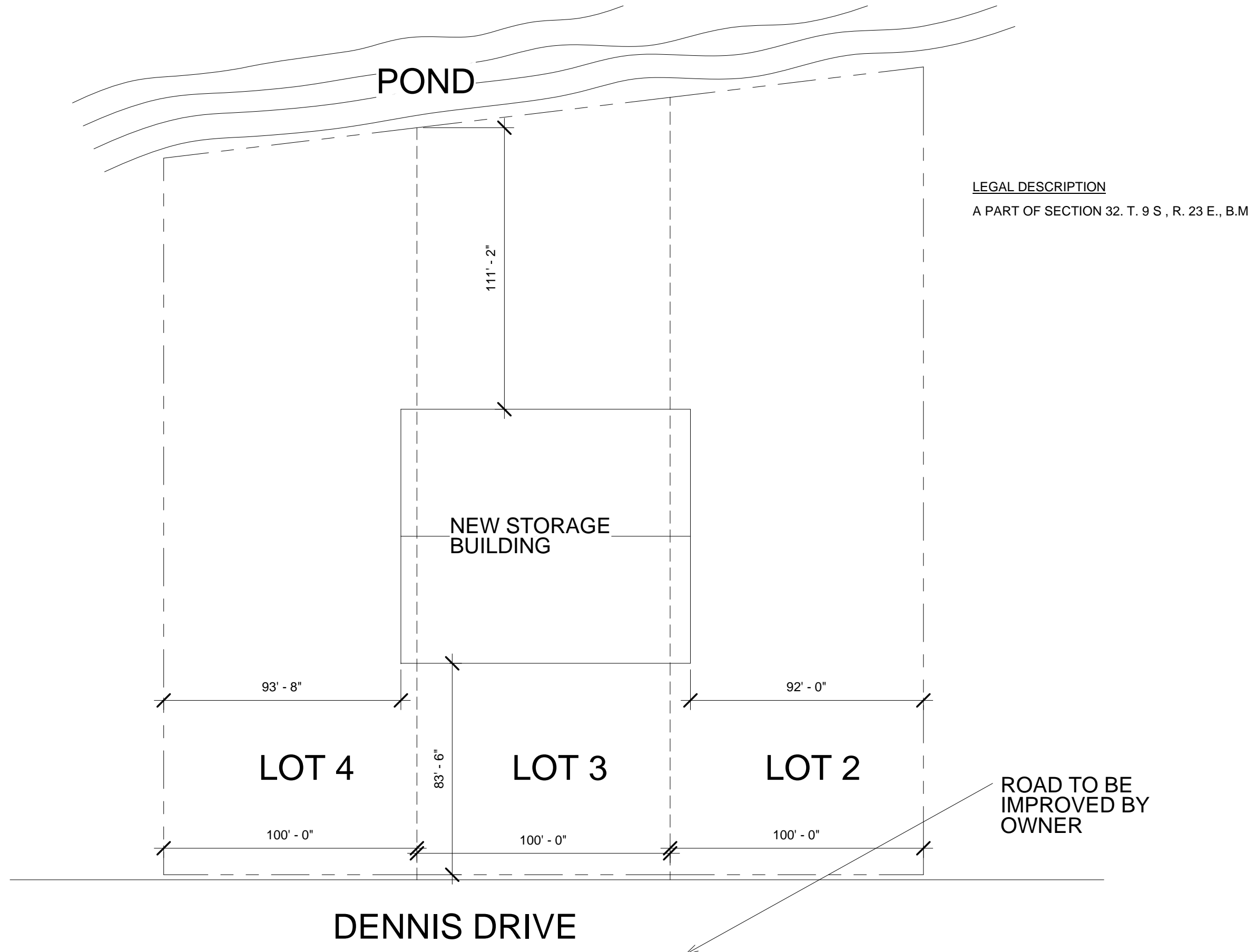
JASON
JONES

REVISION DATE

May 15, 2007

SHEET NUMBER

A106



① Site
1" = 40'-0"

GARY D. JONES
CONSTRUCTION
Building with Pride since 1959
247 W Hwy 30
Burley, ID 83318
Phone: 208-678-1118
Fax: 208-678-1119



SHEET TITLE

SITE PLAN

PROJECT/ OWNER

BUTTE / ZIMMATIC

DRAWN BY

JASON JONES

REVISION DATE

May 15, 2007

SHEET NUMBER

A107