

SHEET TITLE

LEVEL 1

PROJECT/ OWNER

BECK

DRAWN BY

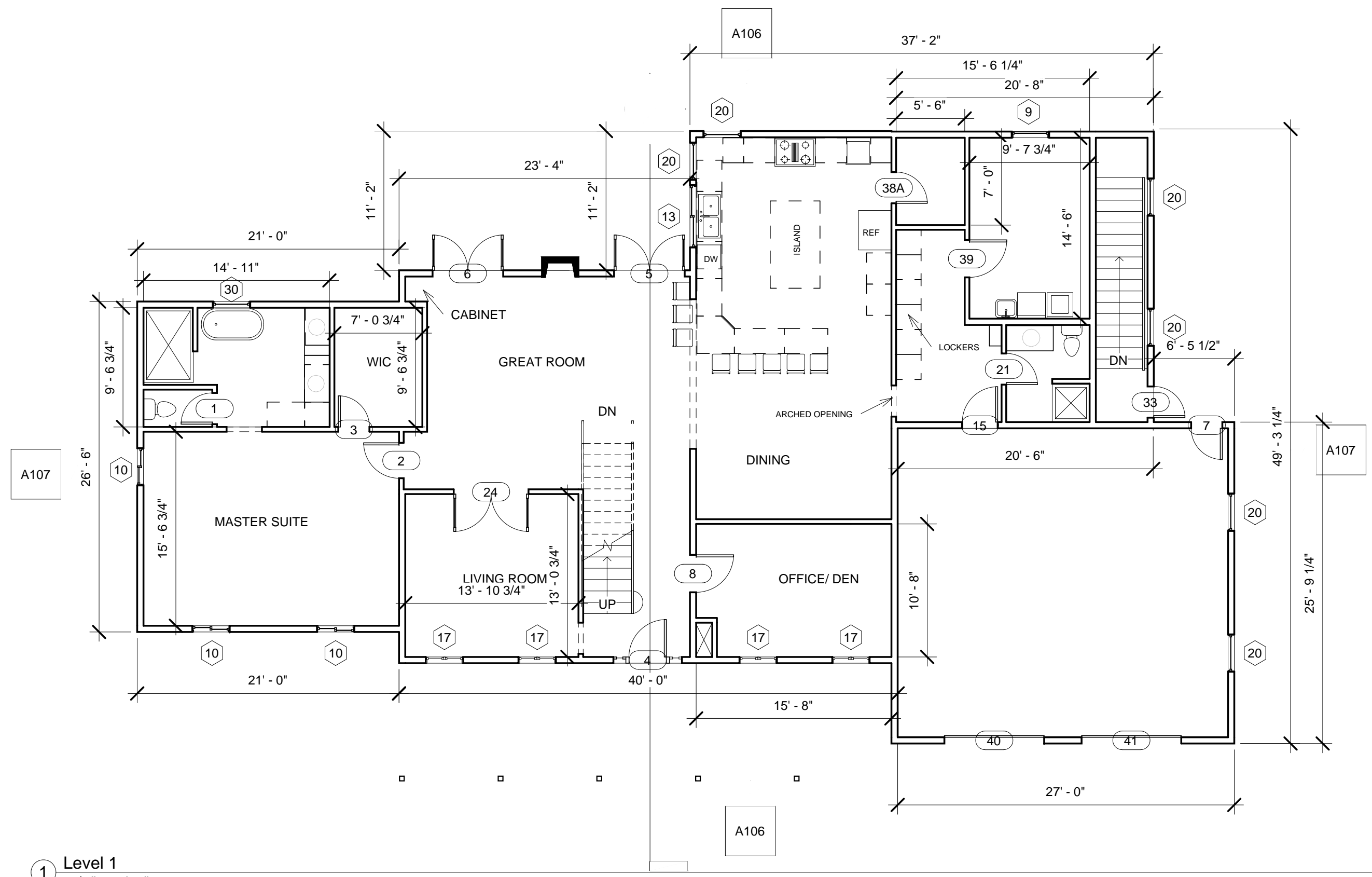
JASON JONES

REVISION DATE

JAN. 11, 2007

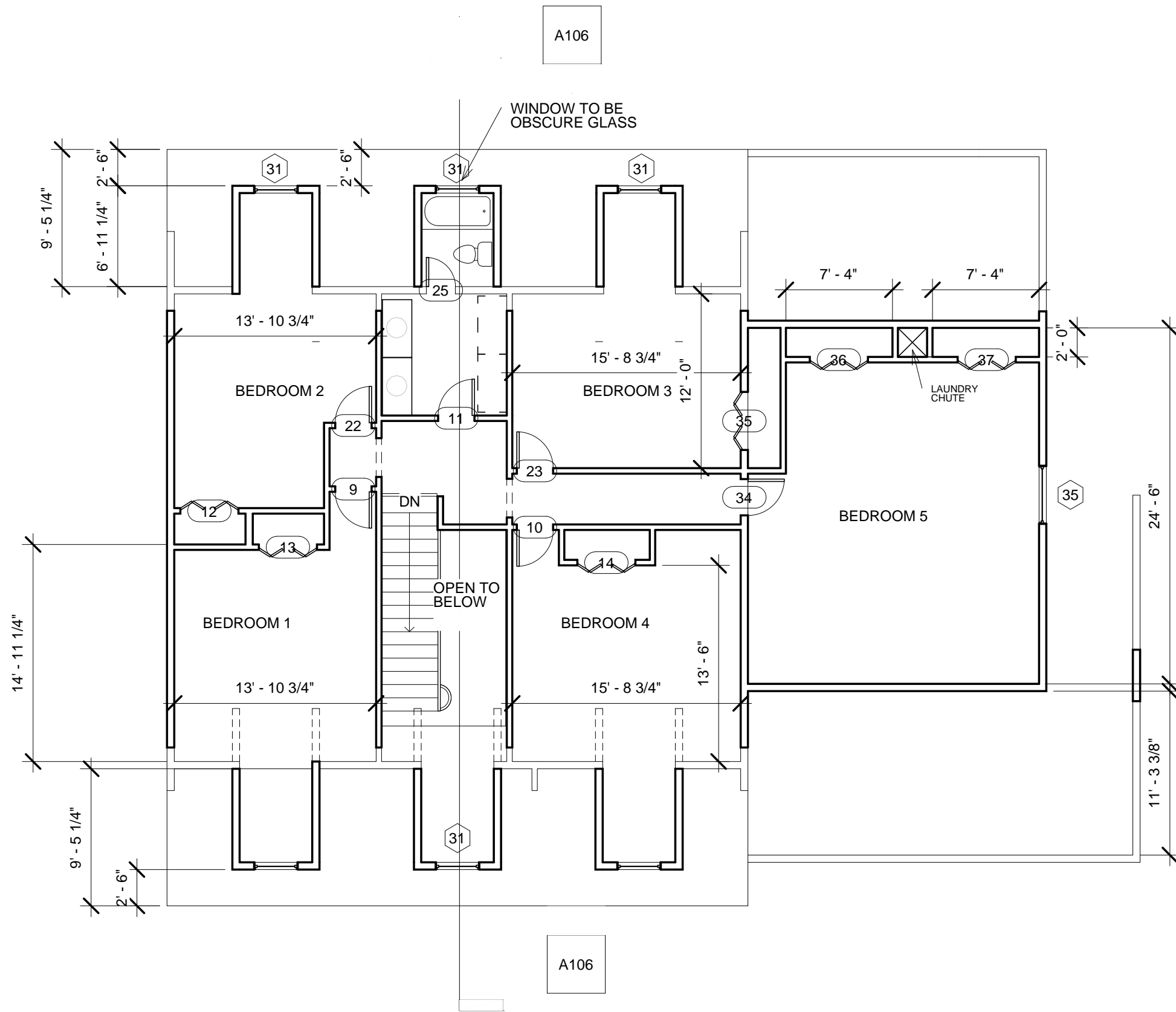
SHEET NUMBER

A101



1 Level 1
1/8" = 1'-0"

A107



A107

① Level 2
 1/8" = 1'-0"



**GARY D. JONES
 CONSTRUCTION**
Building with Pride since 1959
 247 W Hwy 30
 Burley, ID 83318
 Phone: 208-678-1118
 Fax: 208-678-1119

SHEET TITLE
LEVEL 2

PROJECT/ OWNER
BECK

DRAWN BY
JASON JONES

REVISION DATE
 JAN. 11, 2007

SHEET NUMBER
A102

SHEET TITLE

BASEMENT

PROJECT/ OWNER

BECK

DRAWN BY

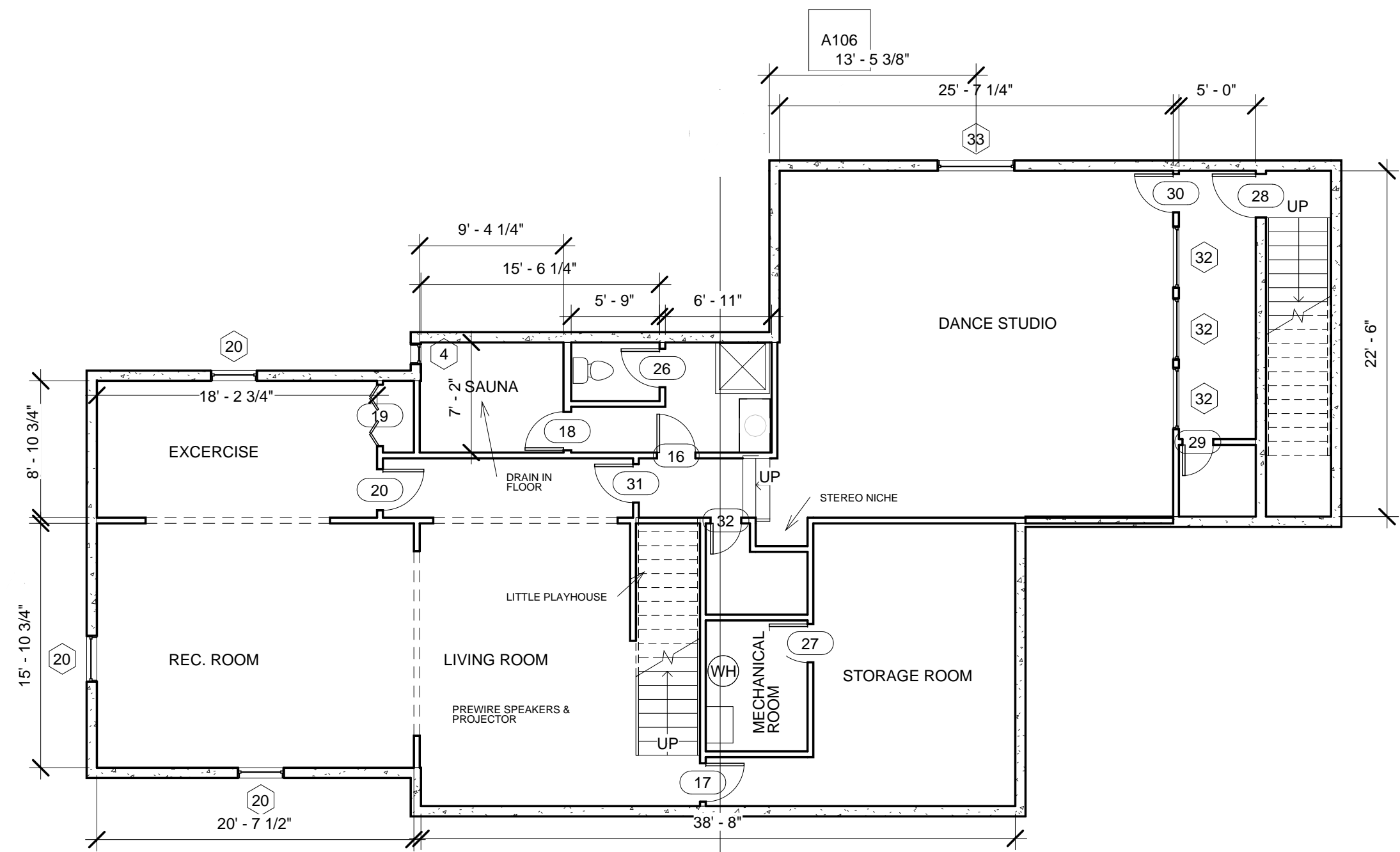
**JASON
JONES**

REVISION DATE

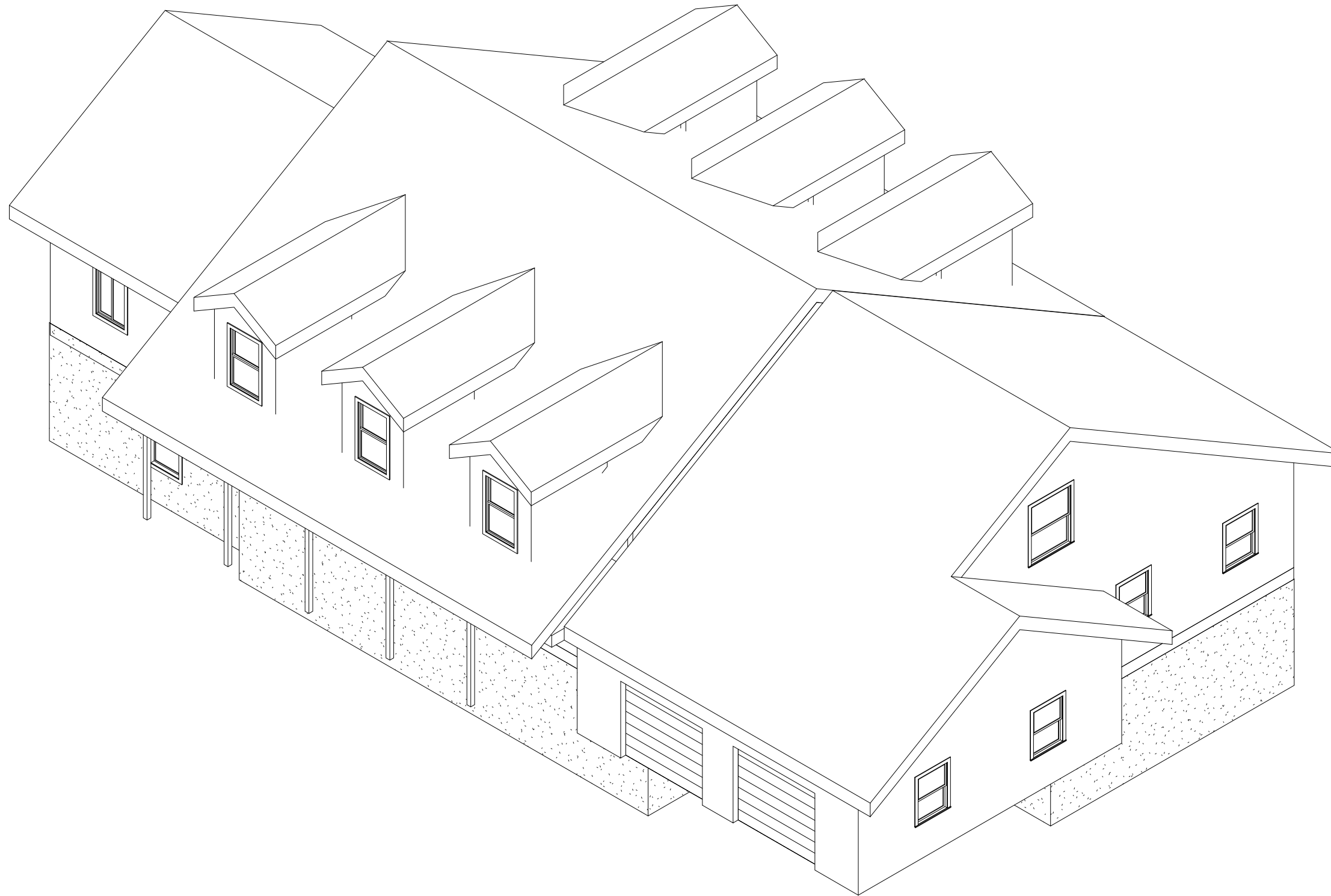
JAN. 11, 2007

SHEET NUMBER

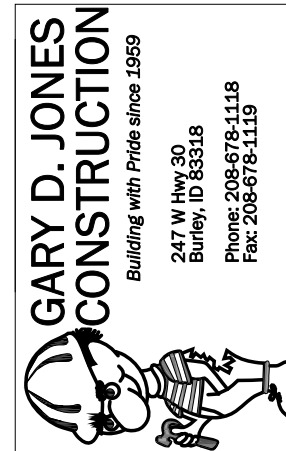
A103



1 Basement
1/8" = 1'-0"



1 {3D}



**GARY D. JONES
CONSTRUCTION**

Building with Pride since 1959
247 W Hwy 30
Burley, ID 83318
Phone: 208-678-1118
Fax: 208-678-1119

SHEET TITLE

3-D VIEW

PROJECT/ OWNER

BECK

DRAWN BY

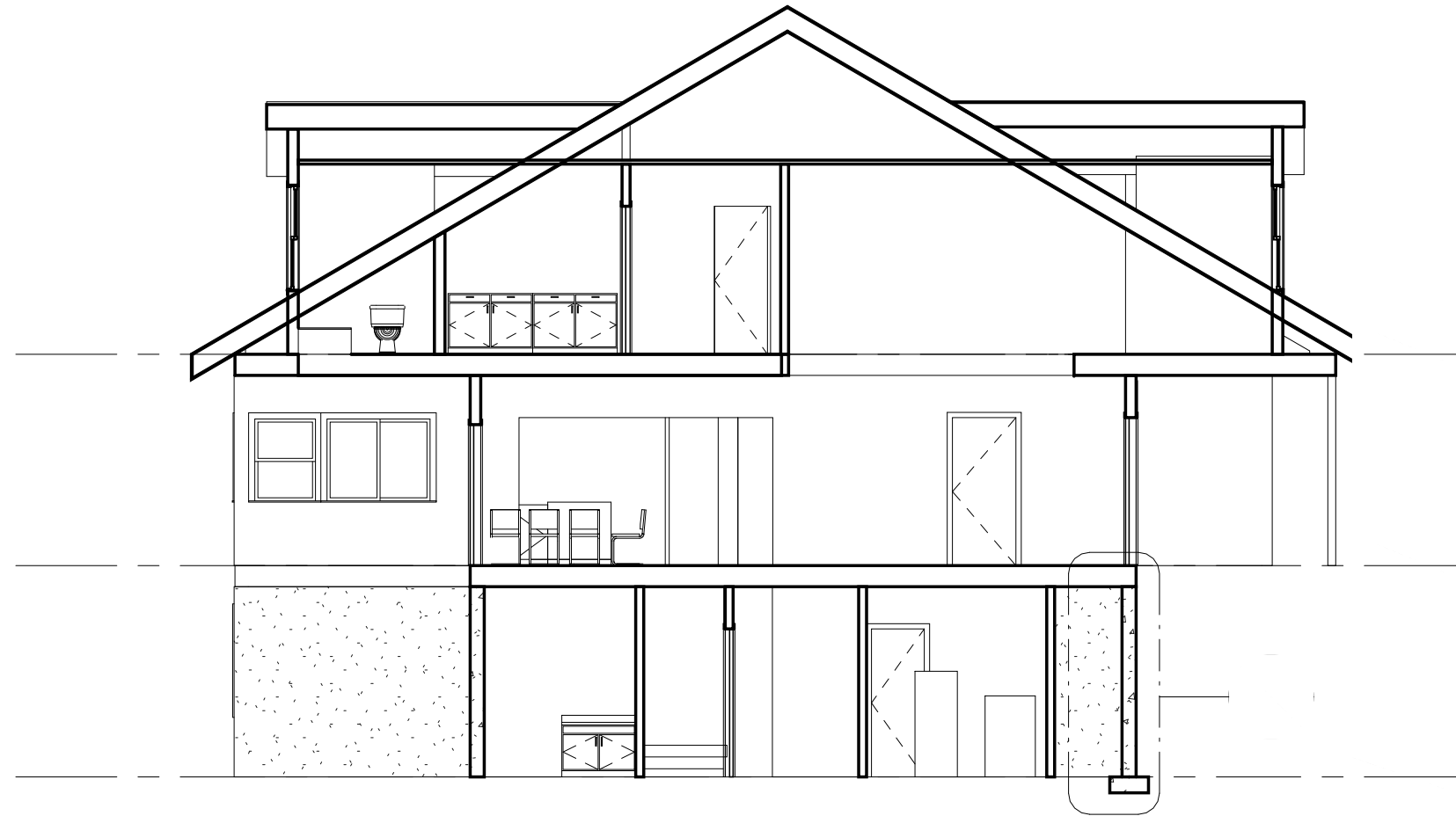
JASON
JONES

REVISION DATE

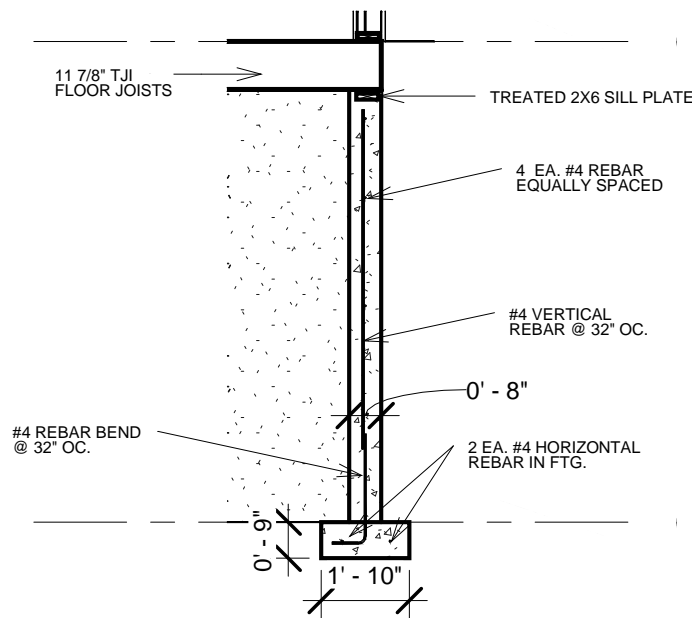
JAN. 11, 2007

SHEET NUMBER

A104



1 Section 1
1/8" = 1'-0"



2 Callout of Section 1
1/4" = 1'-0"

Window Schedule				
Family	Type Mark	Width	Height	Count
Combination Rtp with Trim	17	3' - 0"	4' - 0"	1
Combination Rtp with Trim	17	3' - 0"	4' - 0"	1
Combination Rtp with Trim	17	3' - 0"	4' - 0"	1
Combination Rtp with Trim	17	3' - 0"	4' - 0"	1
Slider with Trim	10	3' - 0"	4' - 0"	1
Slider with Trim	10	3' - 0"	4' - 0"	1
Slider with Trim	10	3' - 0"	4' - 0"	1
Double Hung with Trim	31	3' - 0"	5' - 0"	1
Fixed	9	3' - 0"	6' - 0"	1
Double Hung with Trim	20	3' - 0"	4' - 0"	1
Double Hung with Trim	20	3' - 0"	4' - 0"	1
Double Hung with Trim	20	3' - 0"	4' - 0"	1
Fixed	4	1' - 4"	2' - 0"	1
Double Hung with Trim	31	3' - 0"	5' - 0"	1
Double Hung with Trim	31	3' - 0"	5' - 0"	1
Double Hung with Trim	31	3' - 0"	5' - 0"	1
Fixed	32	4' - 0"	4' - 0"	1
Fixed	32	4' - 0"	4' - 0"	1
Fixed	32	4' - 0"	4' - 0"	1
Double Hung with Trim	35	4' - 0"	5' - 0"	1
Double Hung with Trim	31	3' - 0"	5' - 0"	1
Double Hung with Trim	30	3' - 0"	3' - 0"	1
Double Hung with Trim	20	3' - 0"	4' - 0"	1
Double Hung with Trim	20	3' - 0"	4' - 0"	1
Slider with Trim	13	5' - 0"	4' - 0"	1
Double Hung with Trim	33	5' - 0"	5' - 0"	1
Double Hung with Trim	20	3' - 0"	4' - 0"	1
Double Hung with Trim	20	3' - 0"	4' - 0"	1
Double Hung with Trim	20	3' - 0"	4' - 0"	1
Double Hung with Trim	20	3' - 0"	4' - 0"	1
Double Hung with Trim	20	3' - 0"	4' - 0"	1

Door Schedule					
Assembly Description	Mark	Width	Height	Count	Description
Interior Doors	1	2' - 6"	7' - 0"	1	
Interior Doors	2	2' - 10"	7' - 0"	1	
Interior Doors	3	2' - 6"	7' - 0"	1	
Interior Doors	4	3' - 0"	7' - 0"	1	
Interior Doors	5	5' - 8"	6' - 8"	1	
Interior Doors	6	5' - 8"	6' - 8"	1	
Interior Doors	7	2' - 6"	7' - 0"	1	
Interior Doors	8	3' - 0"	7' - 0"	1	
Interior Doors	9	2' - 6"	7' - 0"	1	
Interior Doors	10	2' - 6"	7' - 0"	1	
Interior Doors	11	2' - 6"	7' - 0"	1	
Interior Doors	12	4' - 0"	7' - 0"	1	
Interior Doors	13	4' - 0"	7' - 0"	1	
Interior Doors	14	4' - 0"	7' - 0"	1	
Interior Doors	15	2' - 10"	7' - 0"	1	
Interior Doors	16	2' - 6"	7' - 0"	1	
Interior Doors	17	2' - 6"	7' - 0"	1	
Interior Doors	18	2' - 6"	7' - 0"	1	
Interior Doors	19	4' - 0"	7' - 0"	1	
Interior Doors	20	2' - 8"	7' - 0"	1	
Interior Doors	21	2' - 6"	7' - 0"	1	
Interior Doors	22	2' - 6"	7' - 0"	1	
Interior Doors	23	2' - 6"	7' - 0"	1	
Interior Doors	24	6' - 0"	7' - 0"	1	
Interior Doors	25	2' - 0"	7' - 0"	1	
Interior Doors	26	2' - 6"	7' - 0"	1	
Interior Doors	27	2' - 6"	7' - 0"	1	
Interior Doors	28	2' - 10"	7' - 0"	1	
Interior Doors	29	2' - 0"	7' - 0"	1	
Interior Doors	30	2' - 6"	7' - 0"	1	
Interior Doors	31	2' - 6"	7' - 0"	1	
Interior Doors	32	2' - 0"	7' - 0"	1	
Interior Doors	33	2' - 6"	7' - 0"	1	
Interior Doors	34	2' - 6"	7' - 0"	1	
Interior Doors	35	4' - 0"	7' - 0"	1	
Interior Doors	36	4' - 0"	7' - 0"	1	
Interior Doors	37	4' - 0"	7' - 0"	1	
Interior Doors	38A	2' - 6"	7' - 0"	1	Arched top
Interior Doors	39	3' - 0"	7' - 0"	1	
Overhead Doors	40	8' - 0"	6' - 6"	1	
Overhead Doors	41	8' - 0"	6' - 6"	1	

Door Schedule-TOTALS			
Assembly Description	Width	Height	Count
Interior Doors	2' - 0"	7' - 0"	3
Interior Doors	2' - 6"	7' - 0"	19
Interior Doors	2' - 8"	7' - 0"	1
Interior Doors	2' - 10"	7' - 0"	3
Interior Doors	3' - 0"	7' - 0"	3
Interior Doors	4' - 0"	7' - 0"	7
Interior Doors	5' - 8"	6' - 8"	2
Interior Doors	6' - 0"	7' - 0"	1
Overhead Doors	8' - 0"	6' - 6"	2

Area Schedule (Gross Building)		
Level	Area	Area Type
Basement	1842 SF	Gross Building Area
Basement	404 SF	Gross Building Area
Level 1	2372 SF	Gross Building Area
Level 1	698 SF	Gross Building Area
Level 2	1545 SF	Gross Building Area



SHEET TITLE

SECTION VIEW

PROJECT/ OWNER

BECK

DRAWN BY

JASON JONES

REVISION DATE

JAN. 11, 2007

SHEET NUMBER

A105



① South
1" = 10'-0"



② North
1" = 10'-0"



**GARY D. JONES
CONSTRUCTION**
Building with Pride since 1959
247 W Hwy 30
Burley, ID 83318
Phone: 208-678-1118
Fax: 208-678-1119

SHEET TITLE

ELEVATIONS

PROJECT/ OWNER

BECK

DRAWN BY

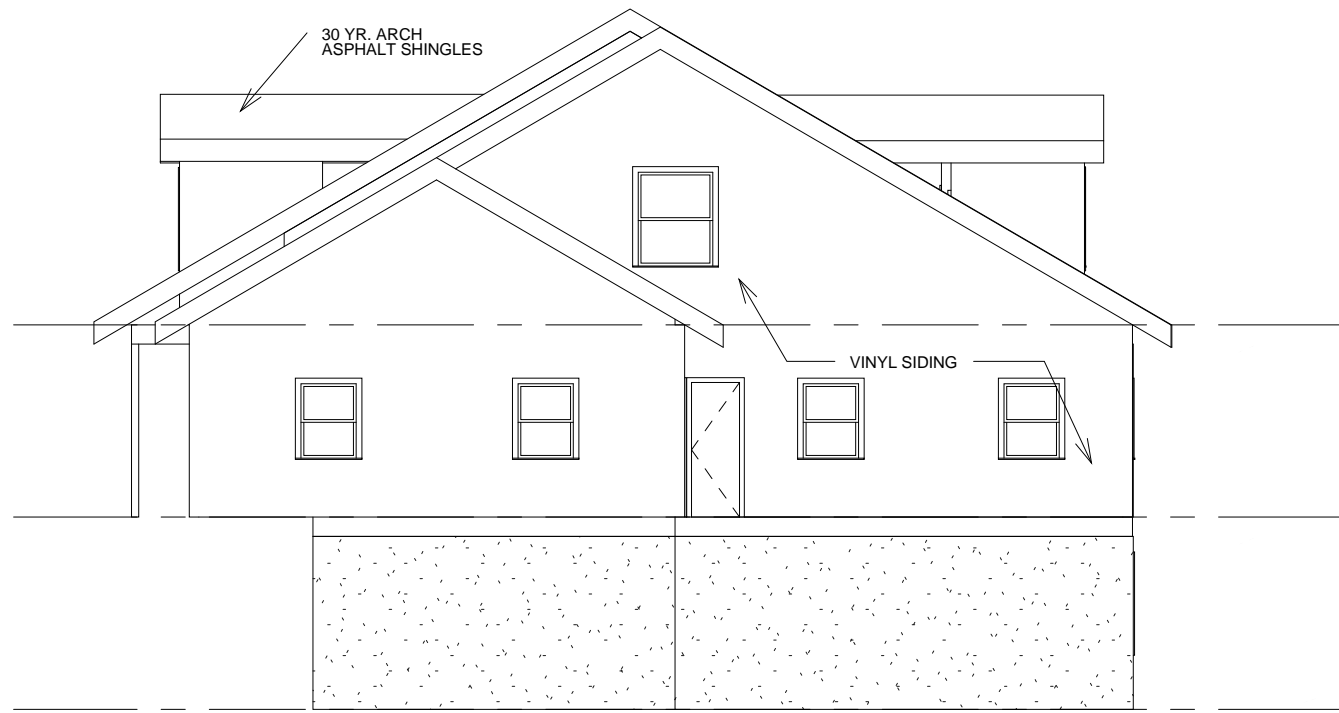
JASON
JONES

REVISION DATE

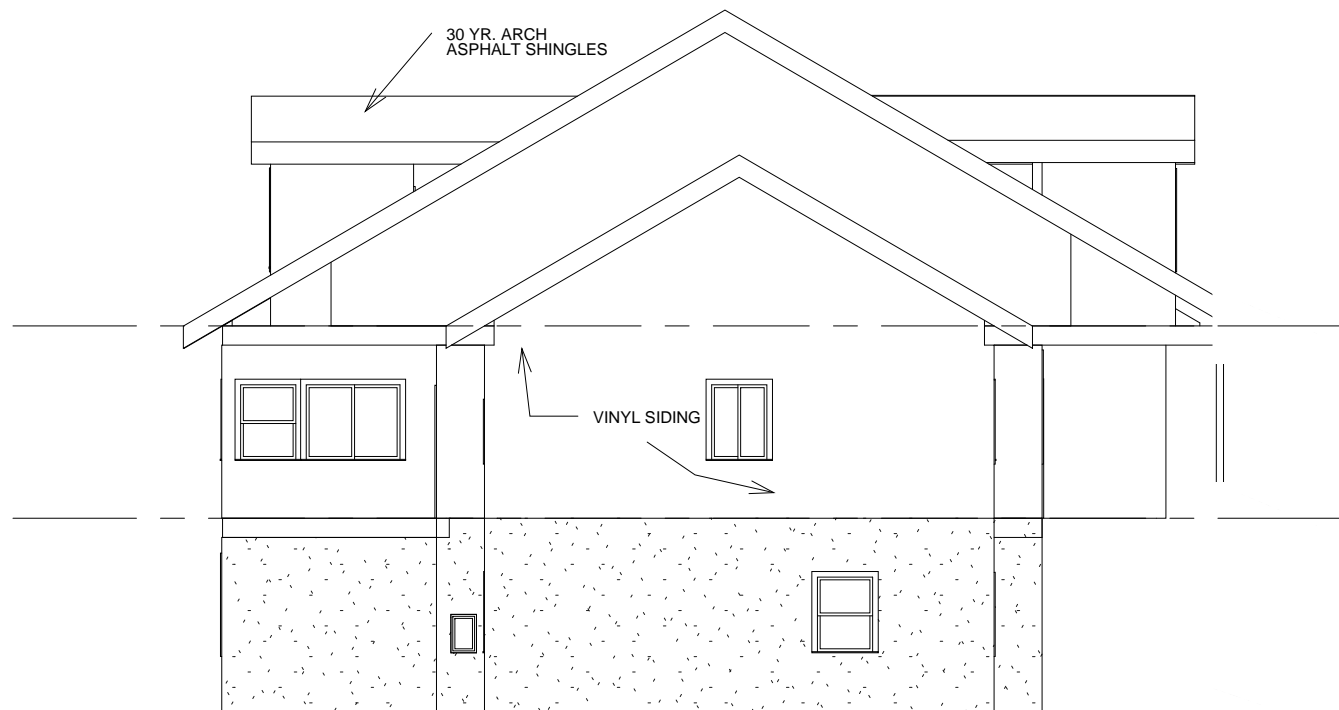
JAN. 11, 2007

SHEET NUMBER

A106



① East
1" = 10'-0"



② West
1" = 10'-0"



SHEET TITLE

ELEVATIONS

PROJECT/ OWNER

BECK

DRAWN BY

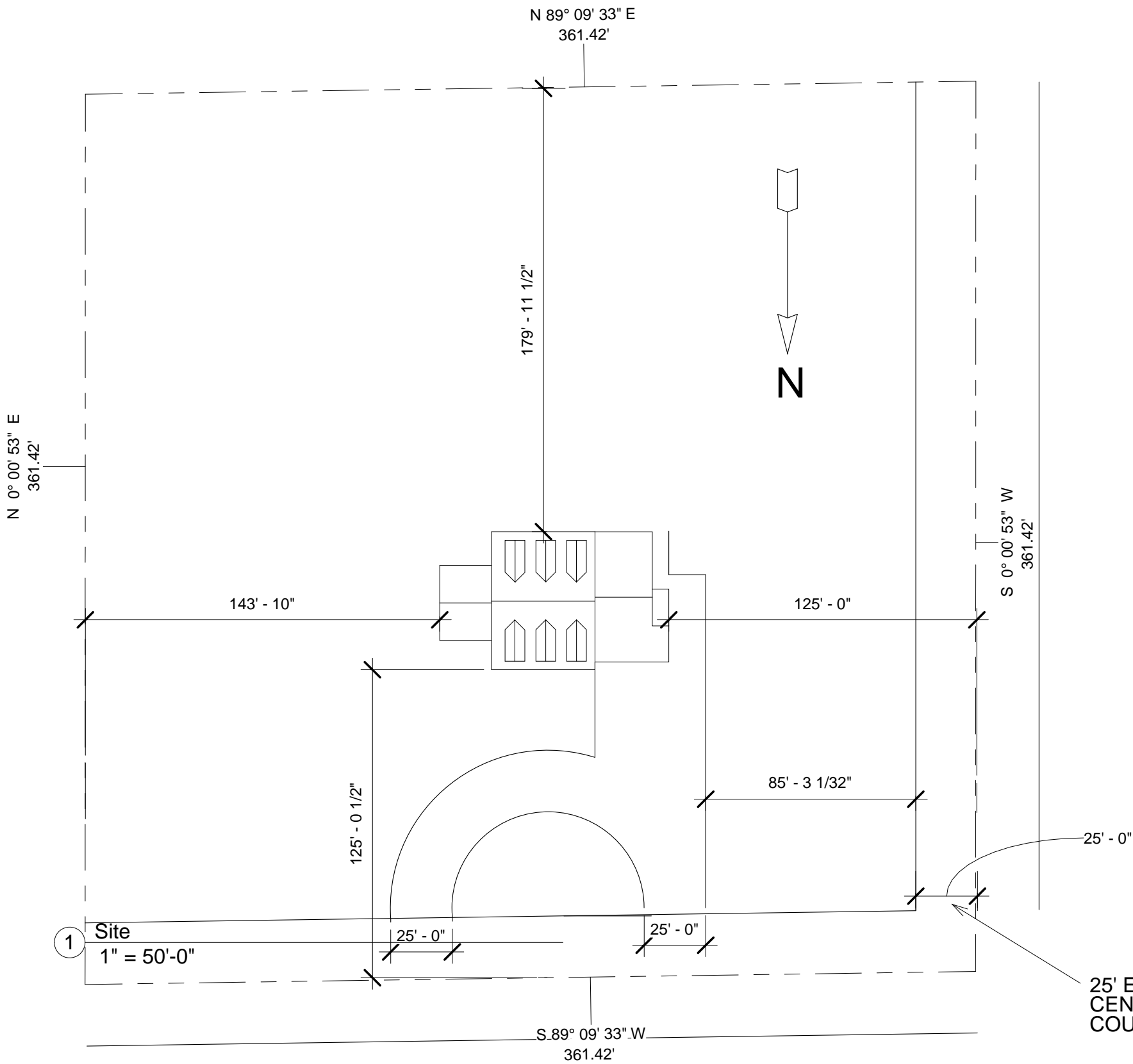
JASON JONES

REVISION DATE

JAN. 11, 2007

SHEET NUMBER

A107



PROPERTY DESCRIPTION - PARCEL 1

Part of the NW 1/4 NW 1/4 of Section 8 of Township 11 South, Range 23 East of the Boise Meridian, Cassia County, State of Idaho.

Beginning at the NW corner of Section 8 of T. 11 S., R. 23 E., B.M. said corner marked by a 3" Cassia County survey cap which shall be the Point of Beginning.

- Thence N. 89° 09' 33" E along section line for 316.50 feet to a P/K. Nail;
- Thence S. 00° 00' 53" W. for 361.50 feet to a 1/2" rebar;
- Thence S. 89° 09' 33" W. for 361.50 feet to a P.K. Nail on section line;
- Thence N. 00° 00' 53" E. along section line for 361.50 feet to the Point of Beginning.

Contains 3.0 acres more or less and is subject to a 25' wide country road right-of-way along the west and north sides.

GARY D. JONES CONSTRUCTION
Building with Pride since 1959
 247 W Hwy 30
 Burley, ID 83318
 Phone: 208-678-1118
 Fax: 208-678-1119

SHEET TITLE
SITE PLAN

PROJECT/ OWNER
BECK

DRAWN BY
JASON JONES

REVISION DATE
 JAN. 11, 2007

SHEET NUMBER
A108

25' EASEMENT FROM CENTER OF COUNTYROAD